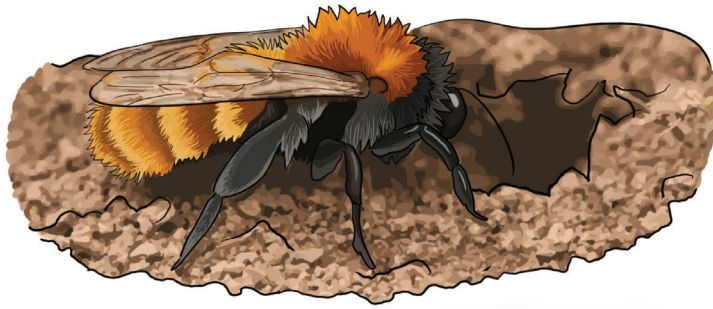
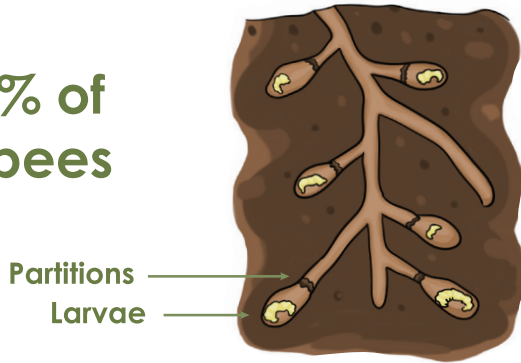




Ground nesting bees



~70% of all bees



~70% of all wild bee species are underground nesting bees. They are solitary insects - each female prepares a separate nest for her brood by dividing it with labyrinths and partitions. They build their nest in the soil - usually in the areas of bare ground or sparsely covered vegetation.

Important facts:

- Does not make honey.
- Lives and nests one by one, can live close to each other.
- Nests in the soil.
- Forms various labyrinths by digging cavities in the soil.
- Nests are covered with a waterproof layer, making them more resistant to rain.
- Larvae and pupae require moderate humidity.
- Searches food at up to 300m distance.
- The biggest enemies are parasites, parasitic wasps and bees, pathogens of fungi or microorganisms.



Nesting habitat requirements:

- A bare ground or small vegetation cover.
- Barriers to prevent the area from overgrowing.
- Area should be protected from trampling (by people or animals).
- Soil options: sandy, a mixture of loam and sand, cob.
- There can be different slopes (from vertical to horizontal).

